

LINKED OPEN DATA USAGE

Eng. Norma Zanetti

Head of R&D Dept., Hyperborea Srl,
n.zanetti@hyperborea.com

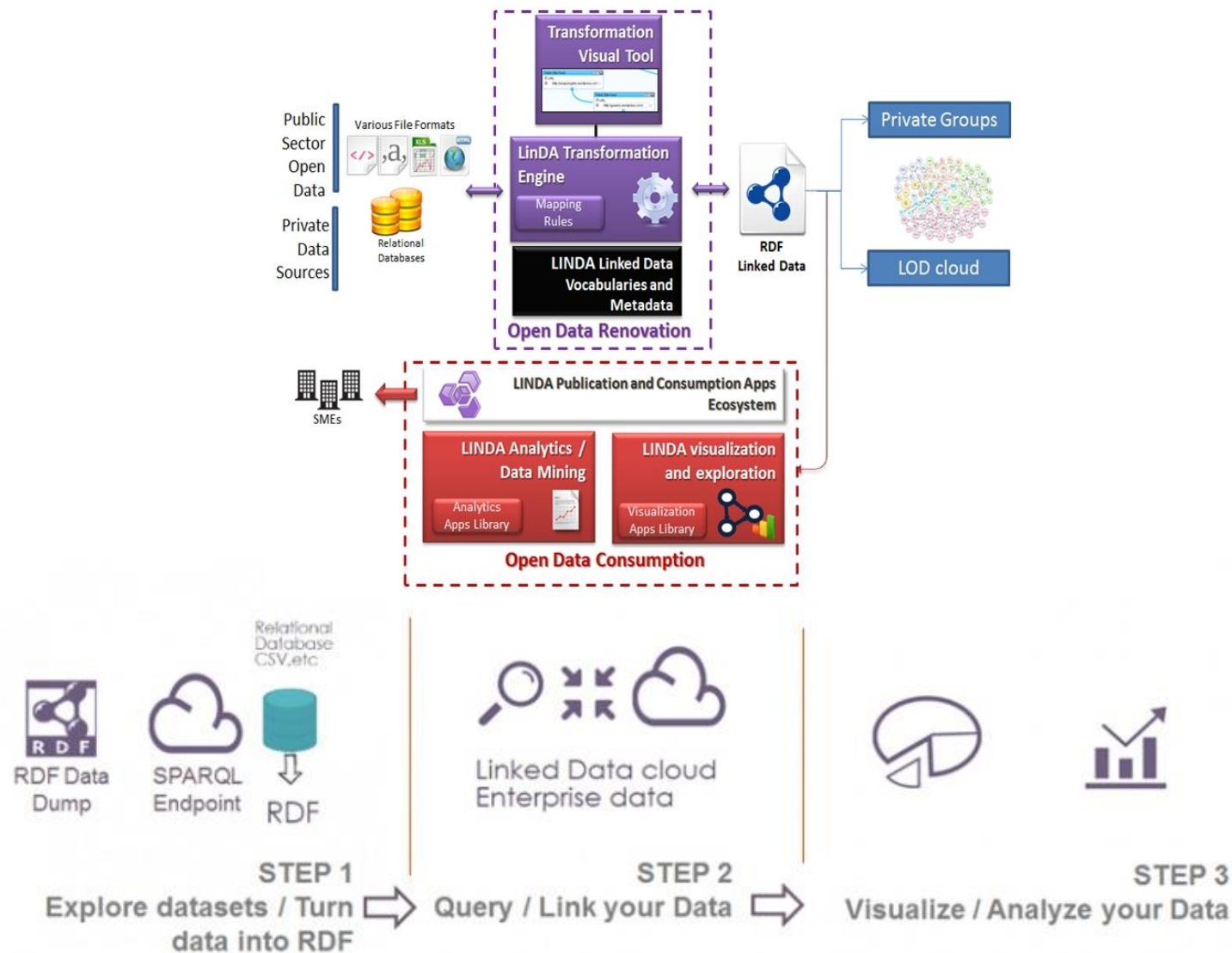
AGENDA

- FP7 LINDA
 - Project aims, workbench
 - SMART Data Processing, Usage and Business Value
- CIP-Pilot actions SDI4APPS
 - Project aims, APIs and SPOIS
 - Land Use Pilot
 - Open Sensor Network Pilot

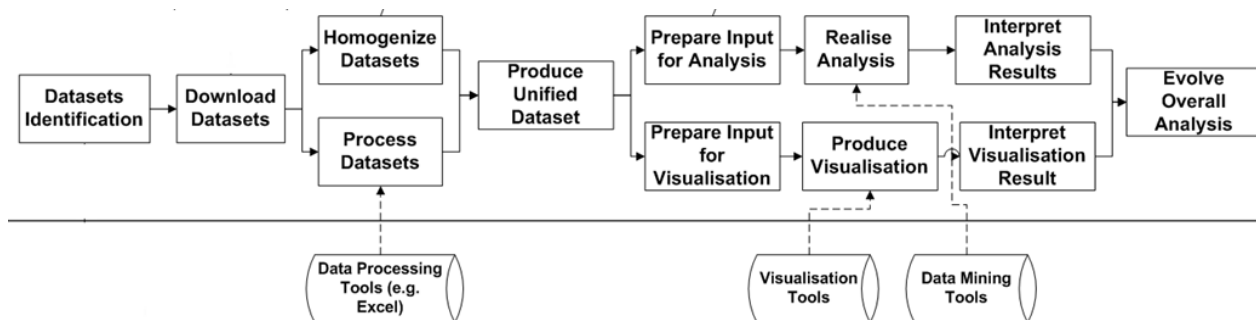
LINDA AIMS

- **Enhance the ability of data providers**, especially public organisations to provide re-usable, machine-processable linked data
- **Provide** out-of-the-box **software components** and analytic tools for SMEs that offer the opportunity to combine and link existing public sector information with privately owned data in the most resourceful and cost-effective manner
- **Deliver** an ecosystem of **Linked Data Publication and Consumption applications** that can be bound together in dynamic and unforeseen ways
- **Demonstrate the feasibility and impact** of the LinDA approach in the European SMEs Sector, over a set of pilot applications
- **Achieve international recognition** and spread excellence for the research undertaken during the LinDA implementation towards **enterprises, scientific communities, data providers and end-users**. Diffuse and communicate readily-exploitable project results, of a pro-normative nature. **Contribute to standardisation and education**

LINDA OPEN SOURCE WORKBENCH



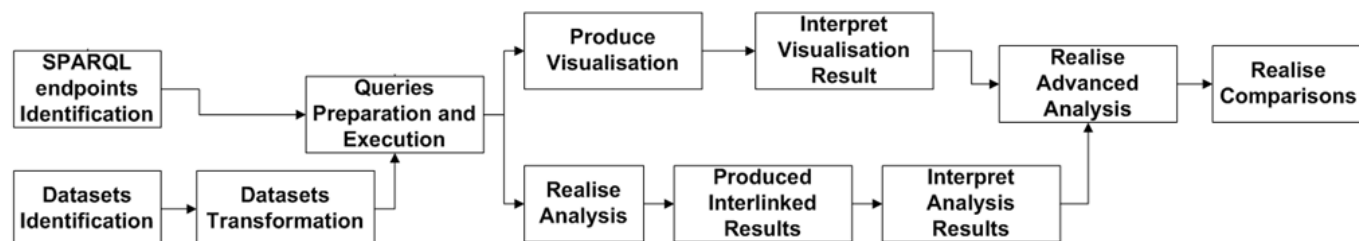
LINDA SMART LOD & BUSINESS VALUE



164 hours to complete task

WORK SMARTER
Not Harder

31 hours within the use of LinDA



+++

- Simple and straightforward use of linked data tools in one centralized workbench
- Reduction of complexity in data collection and management
- Reduce cost & time
- Advanced analysis on environmental issues
- Easy replication of an analysis with up to date datasets
- Analytically-driven decision making

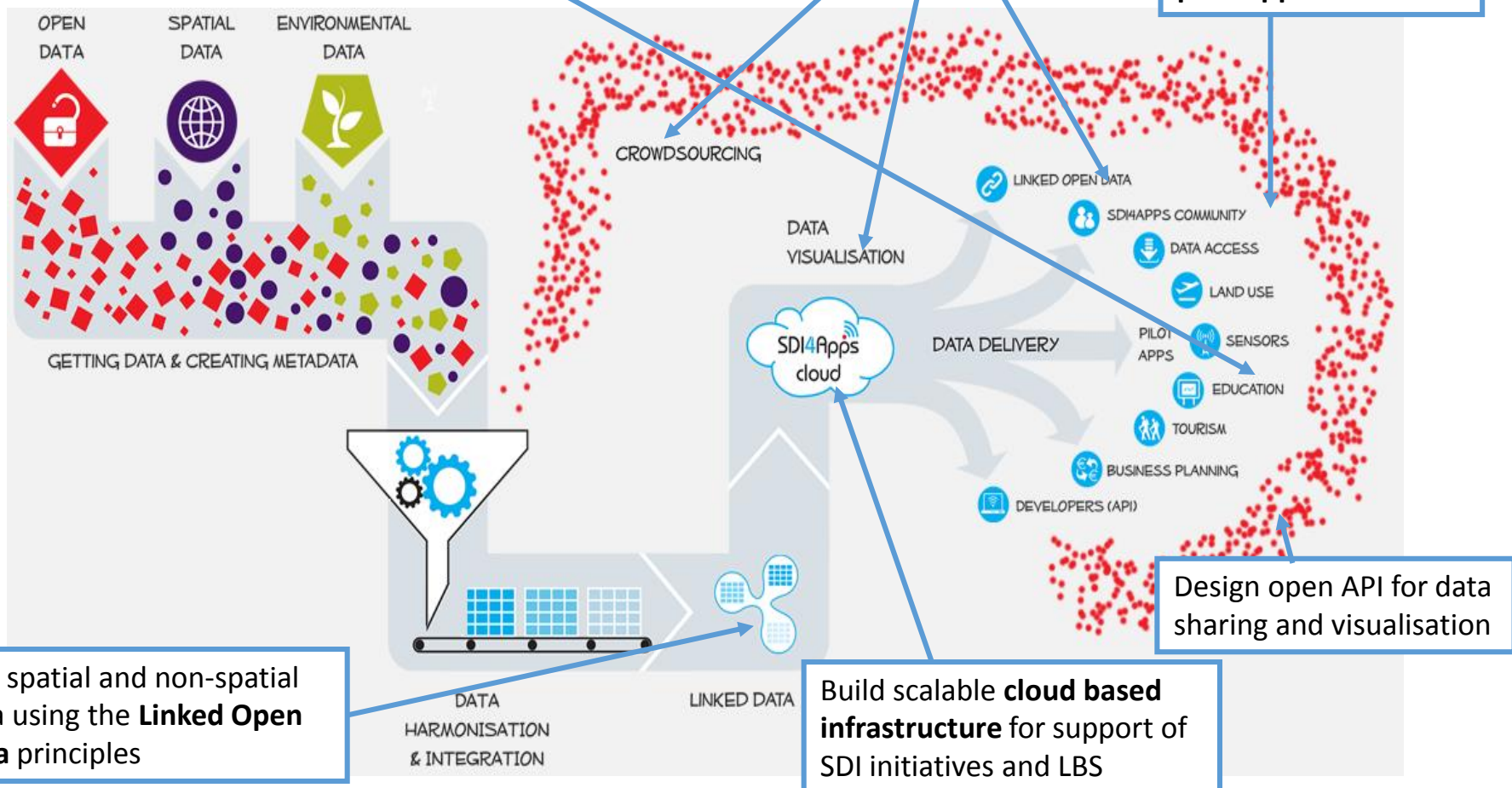
- Mentality shift – Learning curve (Personnel training / skills enhancement)
- Difficulty in analysis interpretation

SDI4APPS AIMS

Integrate in-situ measurements and Earth observation data

Test the **new approaches** for data sharing by end users through pilot applications

Integrate a demonstration set of **pilot applications**.



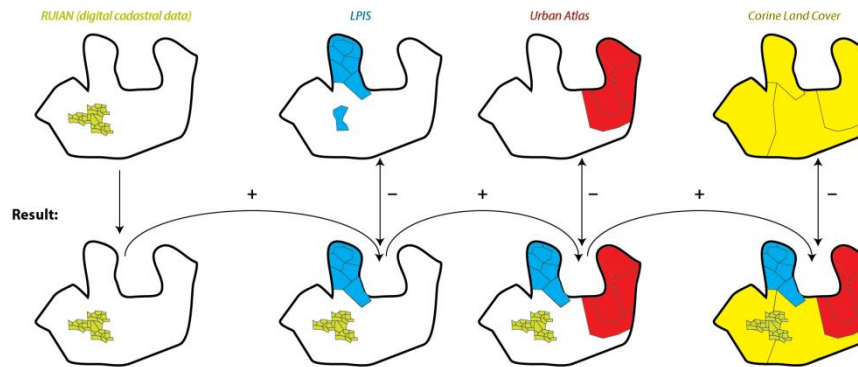
Link spatial and non-spatial data using the **Linked Open Data** principles

Build scalable **cloud based infrastructure** for support of SDI initiatives and LBS

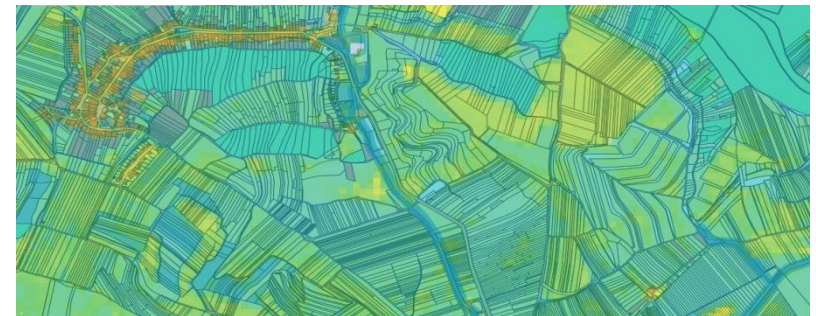
SDI4APPS LAND USE PILOT

The pilot Open Land Use Map through VGI is intending to create open available pan-European map of land use , that will be available to the users in some popular formats used to share geodata (OGC services: WMS/WFS but also as shapefile/kml).

Sources of Data:



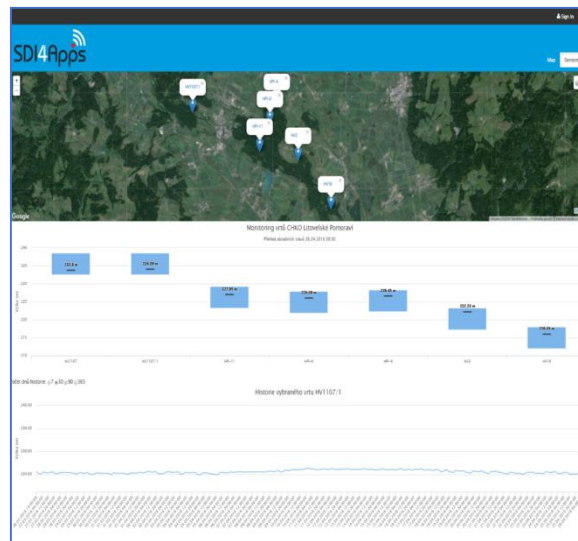
Farming sector: planning production & Normalized Difference Vegetation *Index*



SDI4APPS OSN PILOT

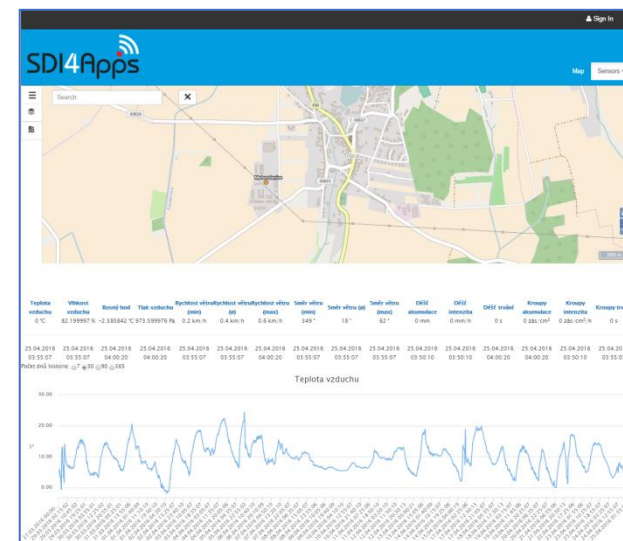
Ground Water Monitoring

The water quality depends on the crop type and the irrigation method, as well the soil types, groundwater levels, soil and water chemistry, nutrient loads, limits on chemicals, the salt tolerance of crops, the leaching of salts, and management of drainage water



Meteorological station

Agriculture requires the collection, storage, sharing and analysis of large quantities of spatially referenced data. For this data to be effectively used, it must be transferred between different hardware, software and organisations



COLLABORATION WITH CAPSELLA

Short –term Period

- SDI4APPS & CAPSELLA JOINT MED-HACKATHON 13-15 July 2016 Patras

Long-term Period

- SDI4APPS bi-directional strong cooperation with FOODIE and CAPSELLA in the Agricultural domain by directly engaging farmers and forest owners

USEFUL LINKS & CONTACTS

FP7 LINDA (completed Nov. '15)

- <http://linda-project.eu/tools/>
- S. Mouzakititis: smouzakititis@epu.ntua.gr

CIP SDI4APPS (3rd year up and running)

- <http://sdi4apps.eu/>
- <http://sdi4apps.eu/project-information/pilot-applications/pilot-4-open-land-use-map-through-vgi>
- <http://portal.sdi4apps.eu/groundwater>
- <http://portal.sdi4apps.eu/meteo>
- <http://portal.sdi4apps.eu/iot-discovery>
- T. Mildorf: mildorf@centrum.cz
- K. Charvat: charvat@ccss.cz

Thank You **CAPSELLA**



COLLECTIVE AWARENESS PLATFORMS FOR ENVIRONMENTALLY-SOUND LAND
MANAGEMENT BASED ON DATA TECHNOLOGIES AND AGROBIODIVERSITY

