

# Collective Awareness Platforms for Environmentally-sound Land management based on data technologies and Agrobiodiversity

## Open Data for Participatory Innovation in Agro-Biodiversity & Food Systems Management




# Pilots in Capsella

Project Deliverable #60: | x Capsella | Capsella Project x

→ ↻ ↺ ⓘ www.capsella.eu

f t in v


Home Activities Communities Events Dissemination About



## Platform

### Pilots

#### Acceleration Programme



### Acquario Civico (Milano)

3th May 2018

#### Food

#### Food Product Data Analytics

#### Storytelling on (Food) Production

#### Compost in Precision Agriculture

#### Personalised Public Food Service

#### Personalized Food Systems: The "Meal Prediction Tool"


#### Data Management for EU Seeds Networks

#### Soil health

## HIGHLIGHTS

### International Symposium on Agroecology: Scaling Up agroecology to achieve the Sustainable Development Goals

## CAPSELLA Project




### WHY AGROBIODIVERSITY

Capsella develops innovative ICT solutions tailored to the needs of all food, field and seed related actors engaging in agrobiodiversity. Above all, we harness the power of open data to help communities innovate.

Capsella has a bottom-up, participatory approach, to ensure ICT responds to your needs. Through user conversations, workshops, hackathons, an online platform for collaboration and sharing open data, we are a platform for your innovation.

Who's using Capsella? Farmers, food & seed communities and networks interact with agroecology, agri-food and ICT experts to test, validate and select the innovative applications and tools best suited to their needs.

### Why?



## CAPSELLA Pilot Activities

Capsella has prototyped new open data solutions to enhance the processes and viability of agrobiodiversity. The pilots are initially small-scale implementations of these prototypes to test and experience the viability of the project idea. They can then scale up and evolve in new directions according to use needs. The CAPSELLA pilots are now in a mature phase, so have a look at what we are doing!

### FIELD

- Compost in Precision Agriculture
- Soil Health Pilot

### SEED

- Data Management for EU Seeds Networks

### FOOD

- Food Product Data Analytics
- Storytelling on (Food) Production
- Personalised Public Food Service
- Personalized Food Systems: The "Meal Prediction Tool"

We use cookies to ensure that we give you the best experience on our website. If you continue to use this site we will assume that you are happy with it.

Ok



# Tested Interesting tools



- Virtual Exhibition
- Soil health webapp & app
- Compost calculator...

# Capsella Compost calculator

- Optimum use of compost
- Max improvement soil
- Accepted addition
  - Logistics and impaction
  - Minerals
    - Enterprise/ parcel: Legal max
    - Subparcel: soil life
- Need of simple decision support tool
- Basis: Soil Scan/ Field zones
- Task maps for machines





# Input: soil map (conductivity), Output: (task)map

Compost Calculator

capsella-pilots.madgik.di.uoa.gr/compost-calculator/#/

Login | Register

**CAPSELLA**  
COLLECTIVE AWARENESS PLATFORMS FOR ENVIRONMENTALLY-SOUND LAND MANAGEMENT BASED ON DATA, TECHNOLOGIES AND AGROBIO-DIVERSITY

1. Choose or import Parcel  
ec\_measurements\_jacob

2. Give your total amount compost input  
Total Compost Input  
20 tons/hectare

3. Give your input per zone

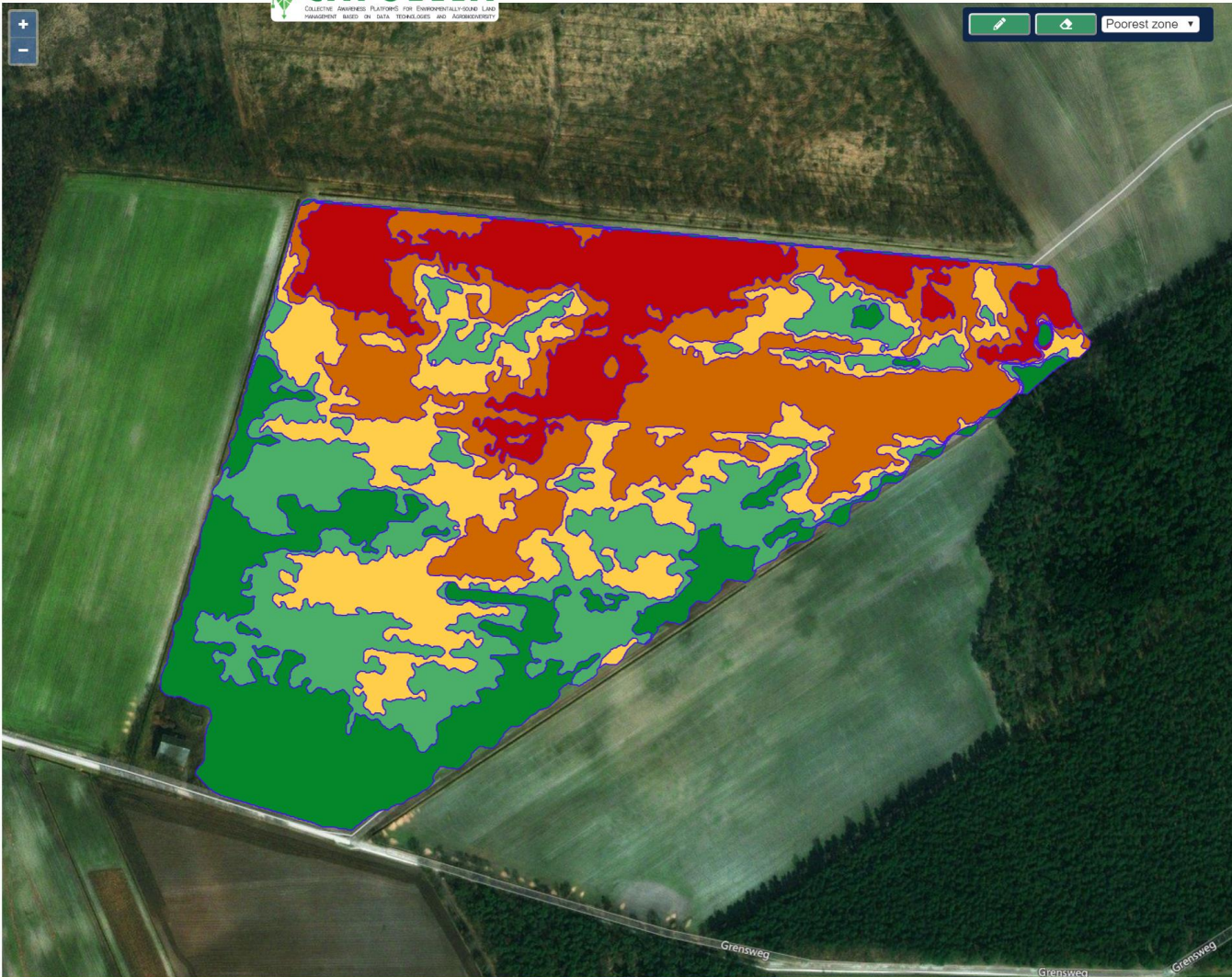
**POOREST zone input**  
50 tons/hectare

**Relative POOR zone input**  
2 32.00 tons/hectare

**Relative AVERAGE zone input**  
1 16.00 tons/hectare

**Relative RICHER than Average zone input**  
0,5 8.00 tons/hectare

**RICHEST zone input**  
0 tons/hectare



ZLTO ATHENA Research & Innovation Information Technologies European Commission



# Input: soil map (conductivity), Output: (task)map

capsella-pilots.madgik.di.uoa.gr/compost-calculator/#/results



Compost Calculator



Login | Register

RECALCULATE

## Suggested Total compost

Total subparcel compost: 487 tons

capsella:ec\_measurements\_jacob

Save

View calculated results for parcel

## Total compost input

Total area: 24.44 Hectares

### Poorest zone Input

Zone area: 3.66 Hectares  
Suggested compost: 183.00 tons

### Poor zone Input

Zone area: 5.74 Hectares  
Suggested compost: 183.68 tons

### Average zone Input

Zone area: 4.96 Hectares  
Suggested compost: 79.36 tons

### Richer than average zone Input

Zone area: 5.27 Hectares  
Suggested compost: 42.16 tons

### Richest zone Input

Zone area: 4.82 Hectares  
Suggested compost: 0.00 tons



European  
Commission



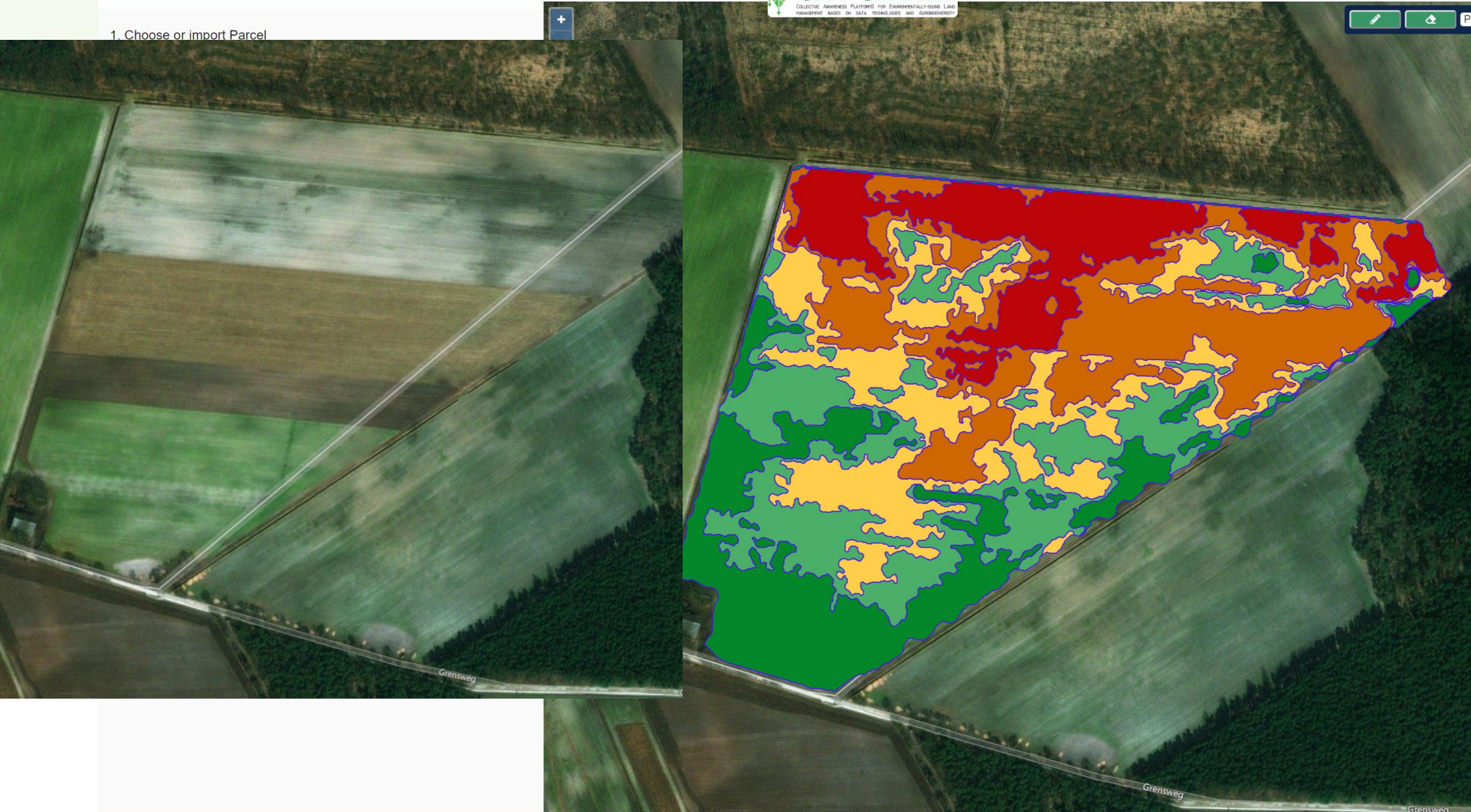
# Input: soil map (conductivity), Output: (task)map

capsella-pilots.madgik.di.uoa.gr/compost-calculator/#/

Compost Calculator

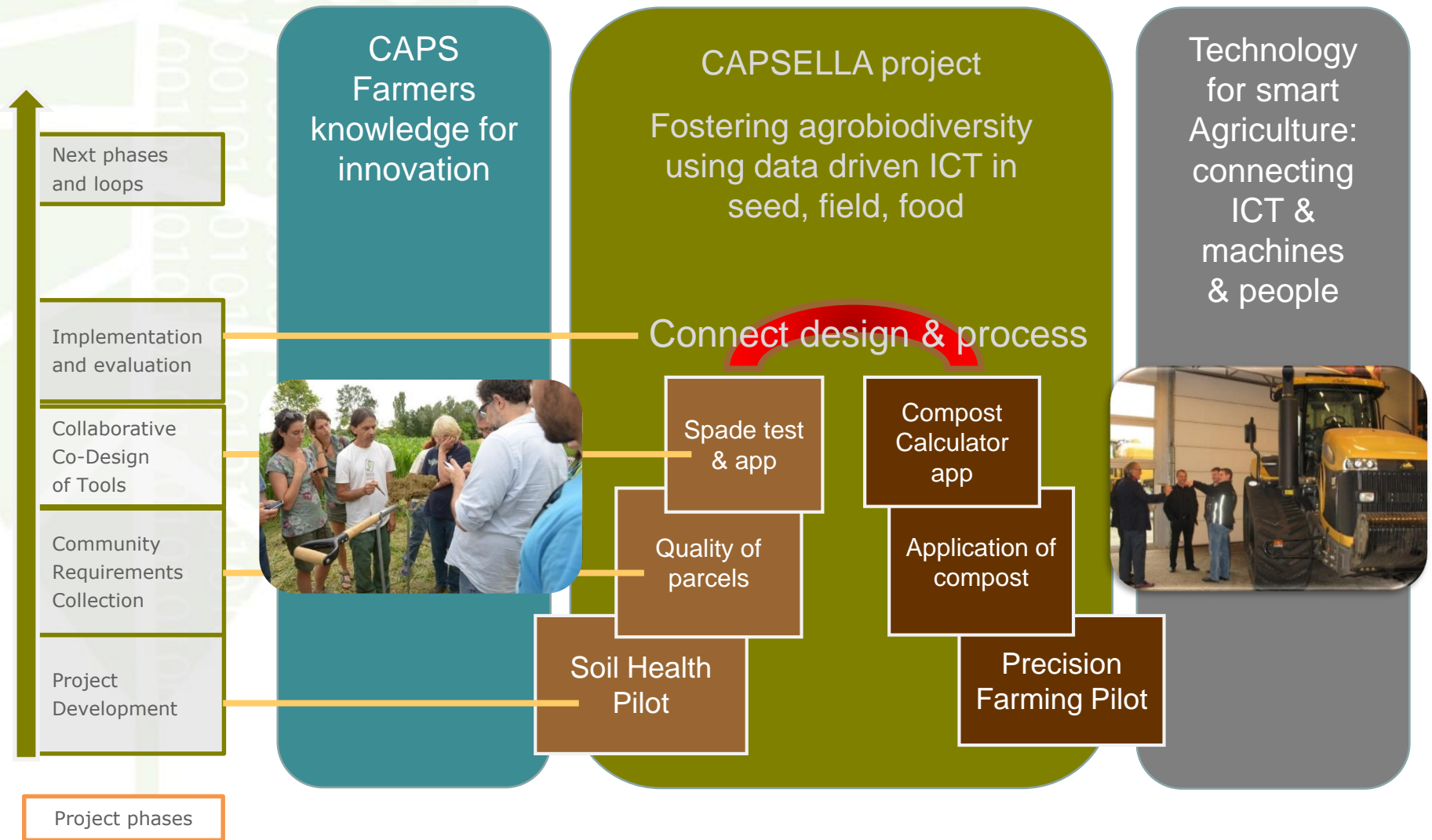


1. Choose or import Parcel



# CAPSELLA practical result, long term impact

Merging two pilots and bringing two different worlds together





# Capsella, bridging between communities

With a **community based** approach, leading to **practical tools for farmers** and citizens, Capsella could make a difference, appreciated by farmers and challenging professionals.

